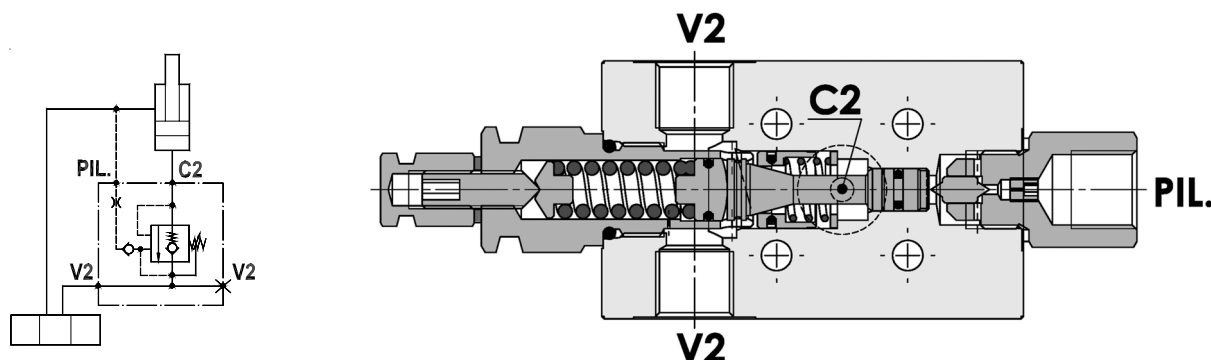


Valvola overcenter singola, montaggio a flangia, pilotaggio a trafilemento
Single overcenter valve, gasket mounted, bleeding pilot

Rev.01-2010/02



SPECIFICHE TECNICHE

Materiali: corpo in acciaio zincato. I componenti interni sono in acciaio trattato termicamente.

Portata max.: fino a 50 l/min

Taratura max.: 350 bar

Rapporto di pilotaggio: 1 : 2

Regolazione pressione: mediante vite

Campo di regolazione pressione: vedere pag.02

TECHNICAL SPECIFICATIONS

Materials: body is steel made zinc plated. Internal parts are in hardened steel.

Rated flow: up to 50 l/min

Max. setting: 350 bar

Pilot ratio: 1 : 2

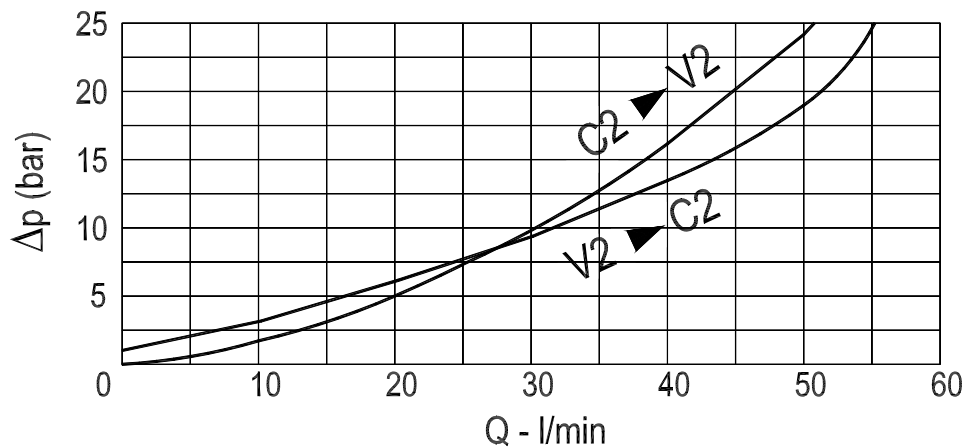
Adjustment means: leakproof screw adjustment

Adjustable pressure range: see page 02

DIAGRAMMA PERDITE DI CARICO - PRESSURE DROP CURVES

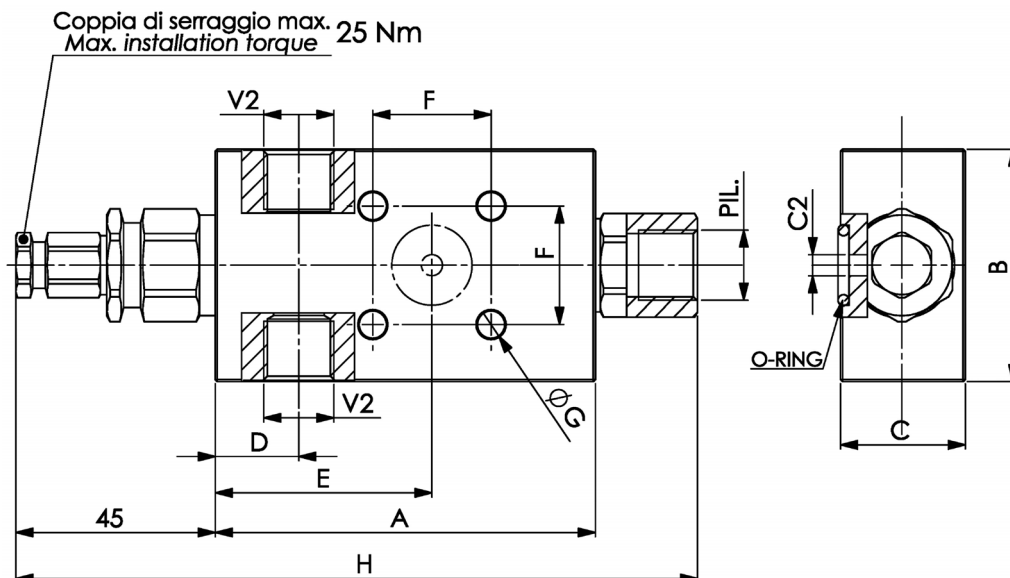
Viscosità olio 24 mm²/sec. (3,5 °E)
 Temperatura 50 °C

Oil viscosity 24 mm²/sec. (3,5 °E)
 Temperature 50 °C



Valvola overcenter singola, montaggio a flangia, pilotaggio a trafilemento
Single overcenter valve, gasket mounted, bleeding pilot

Rev.01-2010/02



MOLLE - SPRINGS				*
Codice Code	Rapp. pil. Pilot ratio	Campo taratura min.-max. bar Adjustable pressure range bar	Increment. press. bar/giro vite Pressure increase bar/tum	Taratura standard bar Standard setting bar
20	1 : 2	60 - 210	70	170
35	1 : 2	80 - 350	120	280

TIPO TYPE	V2	C2	PIL.	A	B	C	D	E	F	G	H	O-RING	PESO WEIGHT
	BSPP	mm	BSPP	mm	mm	mm	mm	mm	mm	mm	mm	mm	Kg
FPO 50 S-3/8"-1F-BP	3/8"	6	3/8"	90	55	29.5	19.5	51	28	6.5	161.5	13.95x2.62	1,140

ESEMPIO DI ORDINAZIONE - ORDERING CODE EXAMPLE

F P O **5 0** **S** **3 / 8** **1 F** **2 0** **B P** *****

* "20" / "35":
 Campi di taratura pressione - Adjustable pressure

Guarnizioni - Seals:
 V=Viton *
 Omettere se BUNA-N
 Omit if BUNA-N